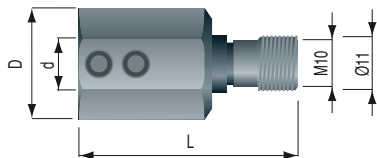


TAH07/1

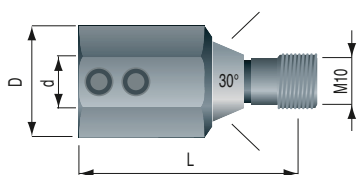
Mandrini per punte componibili Reducing chucks for dowel drills



Attacco per macchine
Chuck for machines
MORBIDELLI - BIESSE

Tipo A | Type A

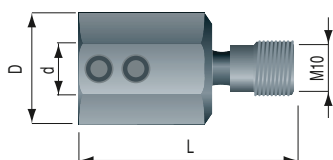
Ø d [mm]	Ø D [mm]	L [mm]	Rotation DX/RH Art. Nr.	Rotation SX/LH Art. Nr.	Disp./Avail.
8	15,5	41	TAH07.01AR.0815	TAH07.01AL.0815	●
10	19,5	41	TAH07.01AR.1019	TAH07.01AL.1019	●



Attacco per macchine
Chuck for machines
VITAP - BUSELLATO - SCHLEICHER

Tipo B | Type B

Ø d [mm]	Ø D [mm]	L [mm]	Rotation DX/RH Art. Nr.	Rotation SX/LH Art. Nr.	Disp./Avail.
8	15,5	46	TAH07.01BR.0815	TAH07.01BL.0815	●
10	19,5	46	TAH07.01BR.1019	TAH07.01BL.1019	●

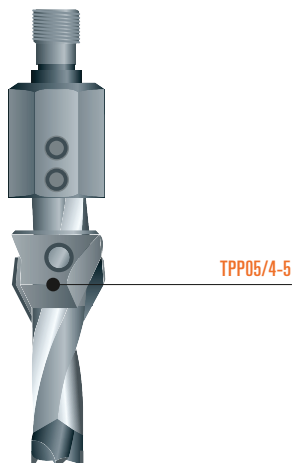


Attacco per macchine
Chuck for machines
AYEN - HOLZMA - MAYER

Tipo C | Type C

Ø d [mm]	Ø D [mm]	L [mm]	Rotation DX/RH Art. Nr.	Rotation SX/LH Art. Nr.	Disp./Avail.
8	15,5	40	TAH07.01CR.0815	TAH07.01CL.0815	●
10	19,5	40	TAH07.01CR.1019	TAH07.01CL.1019	●

Esempi di assemblaggio Assembly examples



Esempio di foro cieco
con svasatura

Examples of blind drilling
with countersink