

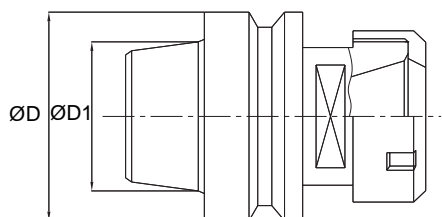
# 1020 MANDRINI PORTA PINZA

## COLLET HOLDERS

Rot.Dx/RH	Rot.Sx/LH	Rif.	D	D1	PINZA - COLLECT
Cod.	Cod.				
001	002	HSK 63 F	63	38	ER 32
003	004	HSK 63 F	63	38	ER 40

D = diametro in mm. - diameter in mm. D1 = diametro in mm. - diameter in mm.  
Rif = riferimento - reference Rot. = senso di rotazione - rotation sense

• SCM - BIESSE - ESSETRE

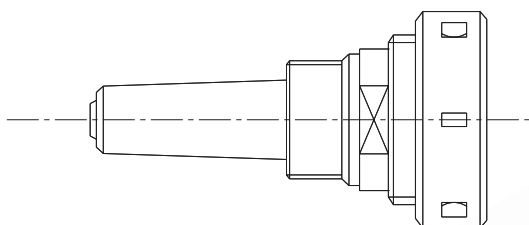


# 1021 MANDRINI PORTA PINZA

## COLLET HOLDERS

Rot.Dx/RH	Rot.Sx/LH	Rif.	PINZA - COLLECT
Cod.	Cod.		
001	002	CM2 M30 x 1,5	ER 32
003	004	CM3 M30 x 1,5	ER 32

Rif = riferimento - reference Rot. = senso di rotazione - rotation sense

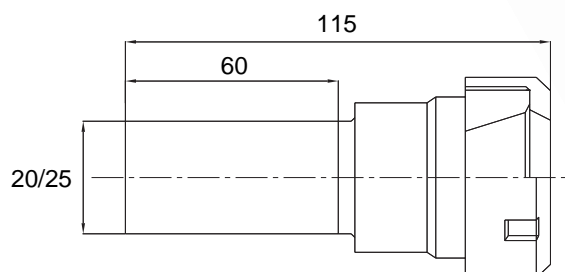


# 1022 MANDRINI PORTA PINZA

## COLLET HOLDERS

Rot.Dx/RH	Rot.Sx/LH	Att.	PINZA - COLLECT
Cod.	Cod.		
001	002	D=20 x 60	ER 32
003	004	D=25 x 60	ER 32

Att. = attacco in mm. - shank in mm. Rot. = senso di rotazione - rotation sense



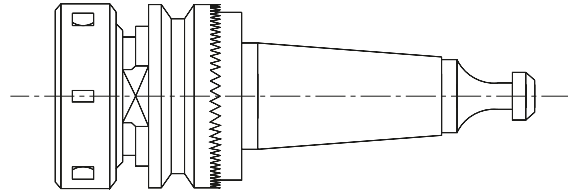
## MANDRINI PORTA PINZA **1023**

### COLLET HOLDERS

Rot.Dx/RH	Rot.Sx/LH	Rif.	PINZA - COLLECT
Cod.	Cod.		
001	002	ISO 30	ER 32
003	004	ISO 30	ER 40

Rif = riferimento - reference Rot. = senso di rotazione - rotation sense

- MORBIDELLI - SCM
- Codolo integrale



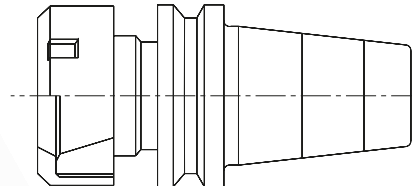
## MANDRINI PORTA PINZA **1024**

### COLLET HOLDERS

Rot.Dx/RH	Rot.Sx/LH	Rif.	PINZA - COLLECT
Cod.	Cod.		
001	002	ISO 30	ER 32
003	004	ISO 30	ER 40

Rif = riferimento - reference Rot. = senso di rotazione - rotation sense

- BIESSE
- Per motori HSD



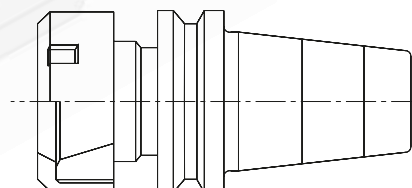
## MANDRINI PORTA PINZA **1025**

### COLLET HOLDERS

Rot.Dx/RH	Rot.Sx/LH	Rif.	PINZA - COLLECT
Cod.	Cod.		
001	002	ISO 30	ER 32
003	004	ISO 30	ER 40

Rif = riferimento - reference Rot. = senso di rotazione - rotation sense

- COSMEC - ALBERTI - VITAP - MASTERWOOD
- Motori Colombo



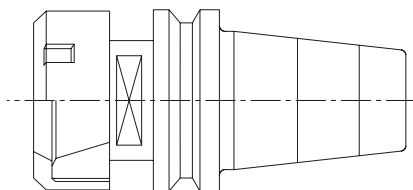
# 1026 MANDRINI PORTA PINZA

## COLLET HOLDERS

Rot.Dx/RH	Rot.Sx/LH	Rif.	PINZA - COLLECT
Cod.	Cod.		
001	002	ISO 40	ER 32
003	004	ISO 40	ER 40

Rif = riferimento - reference Rot. = senso di rotazione - rotation sense

• COSMEC - IMA - WEEKE - MAKA - REICHENBACHER - STEGHERR

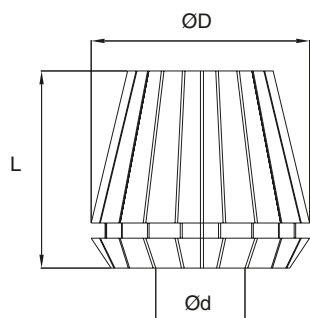


# 1030 PINZE

## COLLECTS

d	ER 25	ER 32	ER 40
	Cod.	Cod.	Cod.
3 - 2	001	015	033
4 - 3	002	016	034
5 - 4	003	017	035
6 - 5	004	018	036
7 - 6	005	019	037
8 - 7	006	020	038
9 - 8	007	021	039
10 - 9	008	022	040
11 - 10	009	023	041
12 - 11	010	024	042
13 - 12	011	025	043
14 - 13	012	026	044
15 - 14	013	027	045
16 - 15	014	028	046
17 - 16	-	029	047
18 - 17	-	030	048
19 - 18	-	031	049
20 - 19	-	032	050
25 - 24	-	-	051

D = diametro in mm. - diameter in mm. d = foro in mm. - bore in mm.

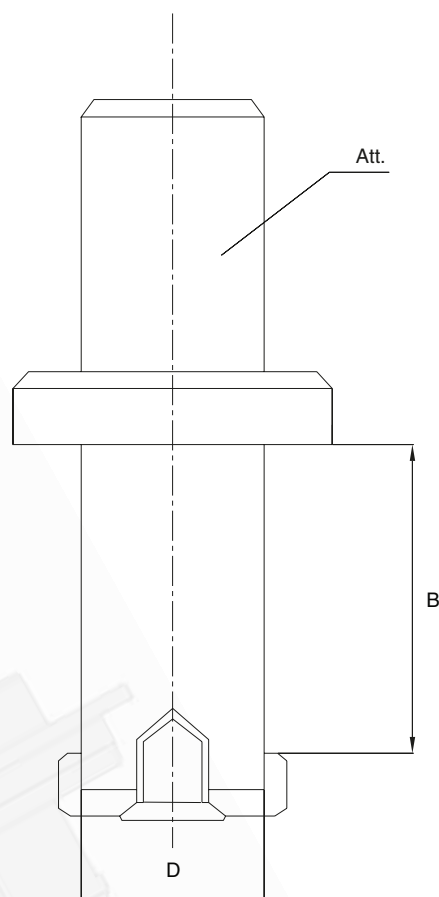


# MANDRINI PORTA FRESE **1015**

## TOOL HOLDERS

Rot.Dx/RH	Rot.Sx/LH	D	B	Att.
Cod.	Cod.			
001	002	20	40	D=20 x 50
003	004	20	50	D=20 x 50
005	006	20	60	D=20 x 50
007	008	25	40	D=25 x 50
009	010	25	50	D=25 x 50
011	012	25	60	D=25x 50
013	014	20	40	CM2 M30 x 1,5
015	016	20	50	CM2 M30 x 1,5
017	018	20	60	CM2 M30 x 1,5
019	020	25	40	CM3 M30 x 1,5
021	022	25	50	CM3 M30 x 1,5
023	024	25	60	CM3 M30 x 1,5

B = spessore in mm. - *cutting height in mm.* D = diametro in mm. - *diameter in mm.*  
 Rot. = senso di rotazione - *rotation sense* Att = attacco in mm. - *shank in mm.*



### CARATTERISTICHE TECNICHE

Esecuzione in acciaio ad alta resistenza.  
 Superfici di accoppiamento totalmente rettificate.

### IMPIEGO

PANTOGRAFO

### TECHNICAL SPECIFICATIONS

High resistance still made.  
 Totally refaced surfaces.

### APPLICATION

ROUTER

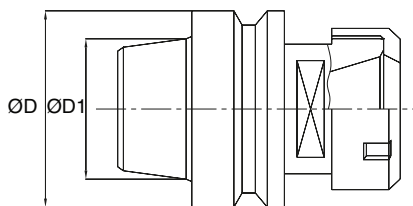
# 1020 MANDRINI PORTA PINZA

## COLLET HOLDERS

Rot.Dx/RH	Rot.Sx/LH	Rif.	D	D1	PINZA - COLLECT
Cod.	Cod.				
001	002	HSK 63 F	63	38	ER 32
003	004	HSK 63 F	63	38	ER 40

D = diametro in mm. - diameter in mm. D1 = diametro in mm. - diameter in mm.  
 Rif = riferimento - reference Rot. = senso di rotazione - rotation sense

• SCM - BIESSE - ESSETRE

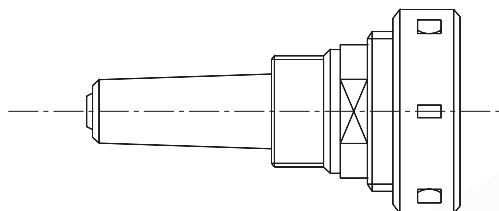


# 1021 MANDRINI PORTA PINZA

## COLLET HOLDERS

Rot.Dx/RH	Rot.Sx/LH	Rif.	PINZA - COLLECT
Cod.	Cod.		
001	002	CM2 M30 x 1,5	ER 32
003	004	CM3 M30 x 1,5	ER 32

Rif = riferimento - reference Rot. = senso di rotazione - rotation sense

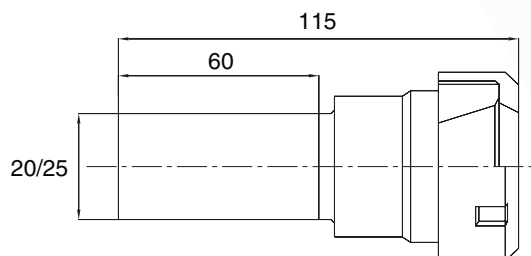


# 1022 MANDRINI PORTA PINZA

## COLLET HOLDERS

Rot.Dx/RH	Rot.Sx/LH	Att.	PINZA - COLLECT
Cod.	Cod.		
001	002	D=20 x 60	ER 32
003	004	D=25 x 60	ER 32

Att. = attacco in mm. - shank in mm. Rot. = senso di rotazione - rotation sense



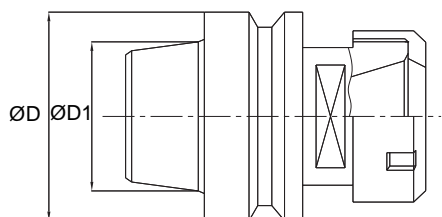
# 1020 MANDRINI PORTA PINZA

## COLLET HOLDERS

Rot.Dx/RH	Rot.Sx/LH	Rif.	D	D1	PINZA - COLLECT
Cod.	Cod.				
001	002	HSK 63 F	63	38	ER 32
003	004	HSK 63 F	63	38	ER 40

D = diametro in mm. - diameter in mm. D1 = diametro in mm. - diameter in mm.  
Rif = riferimento - reference Rot. = senso di rotazione - rotation sense

• SCM - BIESSE - ESSETRE

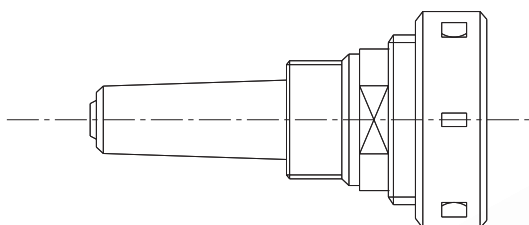


# 1021 MANDRINI PORTA PINZA

## COLLET HOLDERS

Rot.Dx/RH	Rot.Sx/LH	Rif.	PINZA - COLLECT
Cod.	Cod.		
001	002	CM2 M30 x 1,5	ER 32
003	004	CM3 M30 x 1,5	ER 32

Rif = riferimento - reference Rot. = senso di rotazione - rotation sense



# 1022 MANDRINI PORTA PINZA

## COLLET HOLDERS

Rot.Dx/RH	Rot.Sx/LH	Att.	PINZA - COLLECT
Cod.	Cod.		
001	002	D=20 x 60	ER 32
003	004	D=25 x 60	ER 32

Att. = attacco in mm. - shank in mm. Rot. = senso di rotazione - rotation sense

