

Counter Boring Machine

CBM

1

2

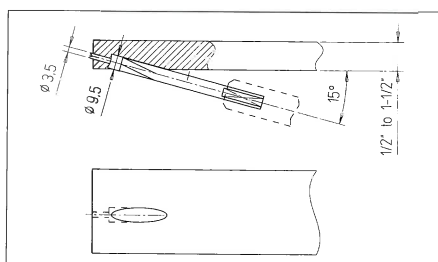
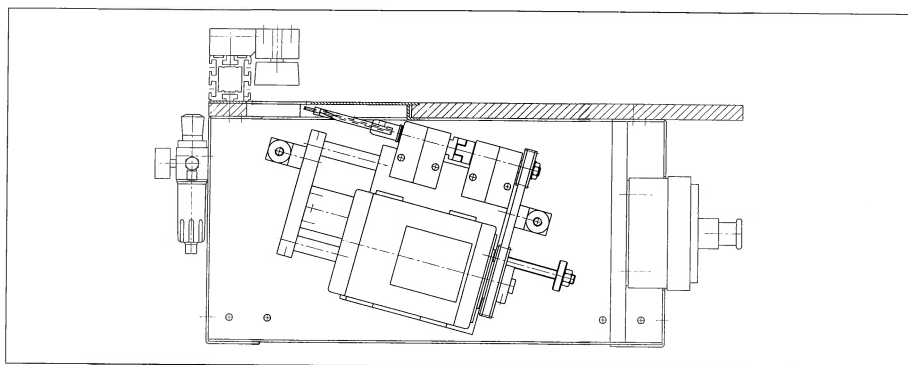
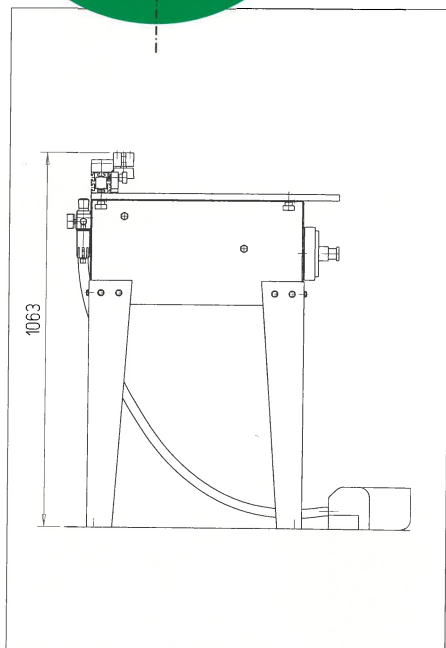


detel 

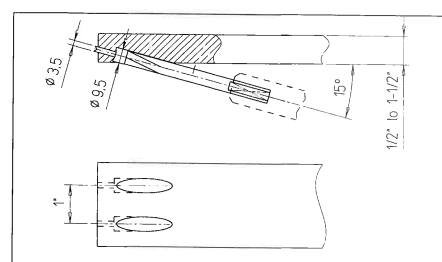
1

2

CBM



CBM-1



CBM-2

CBM counter boring machines are designed to simplify production by eliminating the use of dowls, spline joints, mortise & tenons, frames & clamps. They produce pilot holes and counterbores for perfect alignment of materials and placement of screws. Can be used in all types of wood and for material thickness from 1/2" to 1-1/2". All required machine adjustment can be performed manually in few minutes. Single or double spindle units are available (CBM-1 or CBM-2).

TEHNICAL DATA:

	Europa	USA
Number of spindles	1 (2)	1 (2)
Axial distance	0 (25,4 mm)	0 (1")
Maximum depth of a stroke	70 mm	3"
Size of working table	700 x 600 mm	27" x 23"
Number of revolutions	2800 rpm	3300 rpm
Electric motor power	1.4 kW	2 HP
Electric voltage, frequency	3 x 380 V, 50 Hz	3 x 220 V, 60 Hz
Working pressure	6 bar	90 psi
Air consumption	2 NI/cycle	0.07 cu.ft./cycle
Weight (gross/net)	80 kg	170 pounds
Machine dimensions (length, width, height)	700x 600x1063	27" x 23" x 42"
Packing dimensions (length, width, height)	900x900x500	36" x 36" x 24"

Note: Technical data and illustrations are not binding. We reserve the right carry out modifications without any previous notice.

Printed by RADIO 01/2001